

Intelligent infrastructure

VTOL UAV solutions for Railway & Road



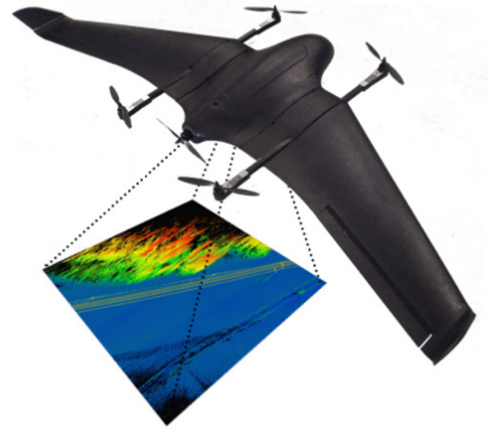
Autonomous UAV solutions for

- **Damage detection**
- **Vegetation & erosion management**
- **Construction planning**
- **Disaster response**

Infrastructure inspection with the DeltaQuad Pro #INSPECT

The DeltaQuad Pro #INSPECT can survey up to 100KM of railways or roads in a single flight, and monitor remote sites up to 50KM distance, using high resolution Thermal and RGB video.

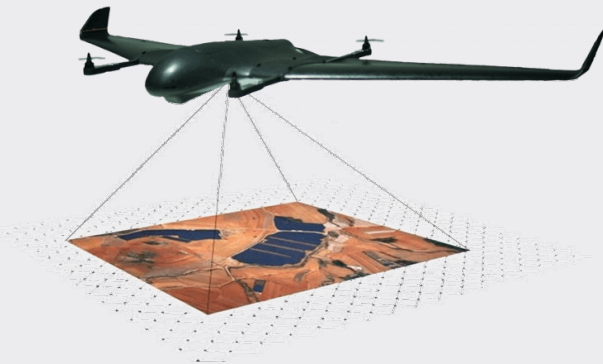
- Inspect overhead contact lines
- Identify road damage
- Monitor vegetation encroachment
- Assess damage from natural disasters
- Measure frost heave, snow and ice related problems



Orthomosaic & 3D mapping with the DeltaQuad Pro #MAP

Aerial intelligence with CM level accuracy for planning, construction and maintenance of infrastructure.

- Plan and prepare railways and road construction with CM level accurate orthomosaic maps
- Digitize infrastructure with 3D point clouds
- Monitor and report on construction progress
- Map environmental conditions and assess construction costs
- Monitor erosion, ground displacement and vegetation activities



Live thermal and RGB video with the DeltaQuad PRO #VIEW

The DeltaQuad Pro #VIEW provides live Thermal and HD RGB video for aerial reconnaissance of remote sites.

- Live HD video of hard to reach areas
- Actionable intelligence for emergencies and natural disasters
- Live reconnaissance of breakage or accidents
- Improve employee safety with aerial reconnaissance in dangerous areas

